

GME MULTI-GAS HE CARTRIDGE

GME MULTI-GAS HE CARTRIDGE

APPLICATIONS:

- Tactical
- Police
- Industrial
- Personal Protection

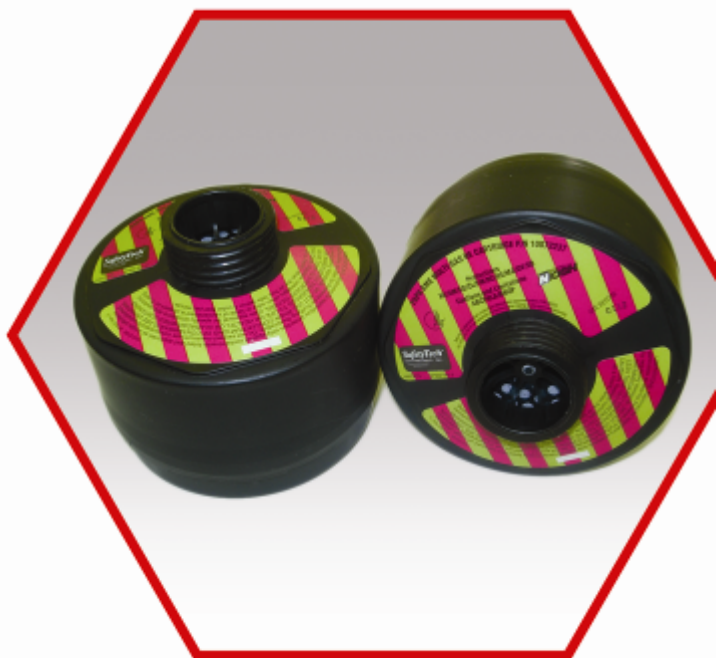
TECHNICAL DATA AND MANUFACTURER CERTIFICATIONS:

Part Number 10072237

Shelf Life 5 Years (sealed)

Weight 0.90 pounds (410 grams)

Connection EN 148-1 (40mm) NATO thread



POSITIVE PRESSURE - TC-23C-2308

APPROVED CONFIGURATION WITH THE GME MULTI-GAS HE CARTRIDGE:

- Millennium® Full Facepiece - Sizes Small, Medium and Large
- UltraElite® Full Facepiece - Sizes Small, Medium and Large
- Promask 2000 Full Facepiece - Size Regular
- C420 Blower, Single Speed Toggle Switch
- Rechargeable NiMH Battery or Non-Rechargeable LiSO₂ Battery
- Responder Breathing Tube - 30" or 36" Long
- Breathing Tube w/90° Swivel
- Web or Decon. Belt Assembly

NIOSH-APPROVED PROTECTION

MEETING 42 CFR PART 84 REQUIREMENTS:

HE	High Efficiency
Ammonia	(AM)
Chlorine Dioxide	(CD)
Chlorine	(CL)
Formaldehyde	(FM)
Hydrogen Chloride	(HC)
Hydrogen Sulfide	(HS)
Methylamine	(MA)
Organic Vapors	(OV)
Sulfur Dioxide	(SD)

GME MULTI-GAS HE CARTRIDGE

POSITIVE PRESSURE - TC-23C-2313

APPROVED CONFIGURATION WITH THE GME MULTI-GAS HE CARTRIDGE:

- Butyl Hood w/Hose Assembly
- C620 Blower, Single Speed Toggle Switch
- Rechargeable Li-Ion 11.1VDC Battery
- Decon. Waist Belt w/Comfort Pad

NIOSH-APPROVED PROTECTION

MEETING 42 CFR PART 84 REQUIREMENTS:

HE	High Efficiency
Ammonia	(AM)
Chlorine Dioxide	(CD)
Chlorine	(CL)
Formaldehyde	(FM)
Hydrogen Chloride	(HC)
Hydrogen Sulfide	(HS)
Methylamine	(MA)
Organic Vapors	(OV)
Sulfur Dioxide	(SD)

POSITIVE PRESSURE - TC-23C-2321

APPROVED CONFIGURATION WITH THE GME MULTI-GAS HE CARTRIDGE:

- Butyl Hood w/Light Weight Hose
- C430 Blower, Single Speed Toggle Switch
- Non-Rechargeable LiSO₂ Battery
- Rechargeable Li-Ion 7.5VDC Battery
- Rechargeable NiMH 6VDC Battery
- Web or Decon. Belt Assembly
- Comfort Pad - Waist Belt

NIOSH-APPROVED PROTECTION

MEETING 42 CFR PART 84 REQUIREMENTS:

HE	High Efficiency
Ammonia	(AM)
Chlorine Dioxide	(CD)
Chlorine	(CL)
Formaldehyde	(FM)
Hydrogen Chloride	(HC)
Hydrogen Sulfide	(HS)
Methylamine	(MA)
Organic Vapors	(OV)
Sulfur Dioxide	(SD)

GME MULTI-GAS HE CARTRIDGE

POSITIVE PRESSURE - TC-23C-2325

APPROVED CONFIGURATION WITH THE GME MULTI-GAS HE CARTRIDGE:

- Butyl Hood w/Light Weight Hose
- C625 Blower, Single Speed Toggle Switch
- Rechargeable Li-Ion 7.4VDC, 6900mAh Stack Pack Battery
- Rechargeable Li-Ion 7.4VDC, 4600mAh Flat Pack Battery
- Web or Decon. Belt Assembly
- Comfort Pad - Waist Belt

NIOSH-APPROVED PROTECTION MEETING 42 CFR PART 84 REQUIREMENTS:

HE	High Efficiency
Ammonia	(AM)
Chlorine Dioxide	(CD)
Chlorine	(CL)
Formaldehyde	(FM)
Hydrogen Chloride	(HC)
Hydrogen Sulfide	(HS)
Methylamine	(MA)
Organic Vapors	(OV)
Sulfur Dioxide	(SD)